



Mason 43 – Defiant

Make: Mason
Model: 43
Length: 43 ft
Year: 1982
Price: \$ 120,000

Boat Name: Defiant
Hull Material: Fiberglass
Fuel Type: Diesel



The "Defiant"

DEFIANT HAS BEEN DONATED TO MAINE MARITIME ACADEMY

AND OFFERED FOR CHARTER WITH OPTION TO PURCHASE

"The Mason 43 is a proven passage-maker with lots of ocean miles to back up this claim. In a blow she heaves to well under staysail and reefed main, lying surprisingly close to the wind." ~ Joe Minick for Cruising World

Defiant is a beautiful example of the Mason 43. With her well thought out cockpit with fitted cushions, open deck space, well maintained interior with beautiful wood work and upgraded upholstery to her new oversize Yanmar engine. This boat will be sold on a charter to own contract and offers tremendous value on today's market. This is a fantastic opportunity that will go quickly.

Measurements

LOA: 43 ft 11 in	Ballast:	8400
LWL: 31 ft 3 in		lb
Beam: 12 ft 4 in	Displacement:	25000
		lb
	Fuel Tanks Capacity:	104
		gal
	Fresh Water Tanks Capacity:	206
		gal
	Number of Cabins:	3
	Number of Heads:	1

Propulsion

Engine #1

Engine Make:	Yanmar	Engine Year:	2016
Engine Model:	4JH57	Power:	57 hp
Primary Engines:	Inboard		
Drive Type:	Direct Drive		
Location:	Center		

Mason 43

"The Mason 43 was designed by Al Mason. During his career Mason worked with Carl Alberg, John Alden, Philip Rhodes and Sparkman & Stephens, as well as independently. His take on design is generally traditional ,

with pleasing proportions and gentle sheer lines. According to PAE's Joe Meglen, the 43 is an "evolution of a successful CCA ocean racer named Sitzmark," which in turn evolved from the Nevins Yawl, Finisterre, and farther back, the New York 32...

Ta Shing Yacht Building Co. of Tainan, Taiwan, built the molds and the boats for PAE. During a tour of Taiwan boat builders in 1986 we felt that Ta Shing was doing the best work of any Taiwanese-owned and operated yard in the country (the other superior yard at that time was Ted Hood's Little Harbor facility). Ta Shing also has built the Norseman 447 Skye 54, the Babas, Flying Dutchmans and Pandas and its own Tasbiba and Taswell lines....

The design of the Mason 43, with its long trunk cabin, generous overhangs and full keel, makes no pretenses of modernity. Apt adjectives include traditional, classic, handsome. and according to the ads "timeless.' With its heavy displacement (d/l ratio= 400) and cutter or ketch rig, cruising is clearly its intention." ~ Practical Boat Buying

Construction

"The Mason boats are heavily built with solid fiberglass hulls, balsa-cored decks, and eight longitudinal foam/fiberglass stringers for added stiffness. Bulkheads are 3/4-inch mahogany plywood bonded to the hull with foam in between to prevent hard spots (the right way to do it). The hull/deck joint of the 43 was... through-bolted, caulked with Thiokol and reinforced with stainless steel flat stock." ~ Practical Boat Buying

- Hull - hand laid to Lloyds +100 A1 specifications with 10 full length longitudinal stringers
- Deck - molded fiberglass sandwich core construction with teak overlay
- Cabin - molded fiberglass sandwich core construction
- Exterior trim - teak
- Cockpit sole - teak grate

Hull and Deck Equipment

Hull

- White topsides
- Blue cove stripe
- Blue boot stripe
- Blue antifouling

Deck

Defiant's features teak decks with a solid teak toe rail that wraps around the deck. The plastic-coated stainless-steel wire lifelines are supported by stainless steel stanchions that are deck mounted. The double wire

lifelines have port and starboard gates and attach to the stainless-steel pulpit on the bow and the stainless steel pushpit on the stern.

Aft deck

- Fishing rod holder on pushpit
- (2) Stainless steel 10 1/4' stern cleats
- Chrome ventilation cowling
- Stern chocks inset in the teak toe rail port and starboard

Cockpit

- Bimini frame with cover (see Soft Goods)
- Pedestal with 28" Yacht Specialties wheel
- Stainless steel pedestal pulpit
- Suite of electronics (see Electronics)
- (3) Teak back rests with stainless steel brackets
- Teak cap rail on cockpit coaming
- Fitted cockpit cushions (see Soft Goods)
- Whale high volume bilge pump
- Maine sheet traveler

Weather Decks

- Genoa track on teak toe rail port and starboard
- Deck prisms
- Stainless steel midships cleats port and starboard
- Midship chocks inset in the teak toe rail port and starboard

Coach Roof

- (3) Teak framed opening deck hatches with smoked acrylic tops
- (14) Opening port lights: (6) port, (6) Starboard, (1) aft and (1) forward
- Teak handrails port and starboard
- Covers for hatches and handrails (see Soft Goods)
- (5) Teak framed dorade boxes with smoked acrylic tops and stainless steel cowls

- Stainless steel frame for dodger with dodger (see Soft Goods)
- Stainless steel pulpits at base of mast port and starboard

Fore Deck

- Nilsson vertical electrical windlass with foot switch
- Stainless steel bow cleats port and starboard
- Bow chocks inset in the teak toe rail port and starboard
- Wash-down fitting
- Stainless steel bow fitting with double bow roller

Spars and Rigging

- Forespar painted aluminum mast
- Forespar painted aluminum boom
- Spreader lights
- Foredeck lights
- Nav-Tec stainless steel turnbuckles
- Complete running rigging
- Stainless steel standing rigging
- Shaefer 08 series blocks
- Main sheet traveler – 2'10" stops and double roller bearing
- Genoa track – 14' stops and lead blocks
- Adjustable mast step
- Storm sail track

Winches/Furling

Cockpit

- (2) Lewmar 52's two speed self-tailing primary winches
- (2) Lewmar 24's two speed secondary winches

On Mast

- Lewmar 30 two speed main halyard winch

- Lewmar 30 two speed Jib halyard winch
- Lewmar 30 two speed spinnaker halyard winch
- Lewmar 10 single speed staysail halyard winch

On Deck

- Profurl stay sail furling drum
- Profurl jib furling drum

Electronics

Helm

- Raymarine E80 GPS, chart plotter, radar display MDF E02011
- Raymarine ST6002 SmartPilot auto pilot
- Danforth Constellation marine compass

Cockpit

- (3) Raymarine ST70 multi-displays
- Yanmar engine display with tach, hour meter, temperature and oil pressure

Mast

- Radar dome
- Anemometer

Salon

- Sony Marine Drive - S MP3 WMA AAC CDX-M50IP stereo receiver

Navigation Station

- Regency Polaris marine radio
- Standard Horizon Explorer marine VHF
- Danforth marine compass

Sails

- Mainsail ~ 2018
- Staysail ~ 2018
- Jib ~ 2018

Soft Goods

Deck

- Bimini with boot - blue
- Traditional mainsail cover - blue with white lettering for name
- Binnacle and wheel cover - blue
- (3) Deck hatch covers - blue
- Hand rail covers - blue
- Dodger over companionway - blue
- Fitted cockpit cushions - tan

Interior

- Salon dinette fitted cushions - green
- Salon settee fitted cushions - maroon with box pattern
- Bosun's berth - green
- Forward cabin mattress with back rest - green
- Forward cabin single settee - maroon with box pattern
- Navigation seat - maroon with box pattern
- Quarter berth in aft cabin - green
- Double berth in aft cabin - maroon with pattern
- Throw pillow with off set fabric - green and maroon with box pattern

Accomodations

"Interior construction and furniture is excellent. Tank mounts, floors, frames, bulkheads and the engine mounts all are heavy to the point of robustness." ~ Blue Water Sailing

Stepping down the companionway from the large cockpit you enter the spacious, well lit, and luxurious interior of Defiant. Her wood work is clean and well maintained. The upholstery is tasteful and well cared for and she is

spacious and well laid out for cruising. To port of the companion way is the wrap around galley with wood counter tops and plenty of storage. This area also features:

- Over head deck hatch
- Opening port light
- Locker storage above counters forward, aft and outboard
- (2) Dome lights under upper storage lockers
- Built in teak cup rack
- Double basin sink with dual pressurized hot/cold fresh water mixing head controls
- Manual fresh water pump
- Manual salt water pump
- Hillerange 3-burner propane stove with oven
- Stainless steel safety bar with twin d-rings inboard of stove
- Sea Frost fridge/freezer in top loading and door opening box ~ 2017
- Fold out extension for counters
- Drawer and locker storage below counters

Moving forward on the port side of the boat is the wrap around dining table. that drops down into a double berth. Also featured in this area:

- Large overhead opening deck hatch with built in screens
- Teak hand rail overhead
- Overhead lighting
- (2) Opening port lights
- Reading lights forward and aft
- 110-Volt outlets
- Kerosene lamp with chimney and cover
- Weems & Plath clock
- Locker and shelf storage outboard above seating
- Sony marine stereo

Continuing forward on the port side you enter the head with walk in stall shower.

Stall Shower

- Track for shower curtain over head
- Vent over shower
- Shower wand with flexible hose and dual pressurized hot/cold fresh water mixing controls
- Teak tower rack/hand rail
- Builtin teak soap tray
- Storage lockers outboard
- Teak bench in shower
- Teak grate over shower sump

Head

- Overhead dome lighting
- Opening port light
- Large medicine cabinet with mirror face above sink
- Dometic tank monitor
- Bronze towel rack
- (2) Builtin teak cup racks
- 110-Volt outlets
- Single basin sink with dual pressurized hot/cold fresh water mixing head controls
- Manual fresh water pump
- Marble counters
- Storage locker outboard above head
- Manual marine head
- Locker storage below sink

Just forward of the head is Defiant's forward cabin with a Pullman style bunk and single settee offset to the starboard side of the bunk. Well lit with tons of storage this area features:

- Bi-fold teak entry door
- Large overhead opening deck hatch with built in screens
- Port lights port, starboard and forward
- Reading lights port and starboard
- 110-Volt outlets
- Shelf storage outboard port and starboard above bunks

- Access to chain locker forward
- Credenza with locker above counter top and drawer and locker storage below
- Hanging locker outboard to starboard
- Drawer and locker storage below bunk

Returning to the salon from the forward cabin on the starboard side of the boat the sheer volume of storage that Defiant has becomes obvious with the large wardrobe locker with double doors followed by a credenza with locker storage above counter and drawer and locker storage below counter. Adding to this:

- Teak hand rail overhead
- (3) Opening port lights
- Shelf storage outboard
- 110-Volt outlets
- Reading light forward
- Marine speakers
- Bosun's berth
- Storage below settee
- Hanging locker aft of the settee

On the aft side of the hanging locker, out board, is the aft facing navigation station hat offers great access to the cockpit in a secure and protected location:

- Opening port light
- Overhead dome lighting
- Deck prism
- Suite of electronics (see Electronics)
- Seth Thomas marine clock
- Seth Thomas weather barometer
- Electric panel (see electrical)
- APC electrical monitor
- Spray wall inboard of navigation station with acrylic see through insert
- Storage above chart table
- Top loading chart table
- Storage above and outboard navigation seat

- Battery switch below navigation seat

Just inboard of the navigation station is the teak stairs to the cockpit with stainless steel hand rails for safe passage up and down the companionway steps. Moving inboard and continuing aft you enter spacious aft cabin with:

- Overhead opening deck hatch with built in screens
- Overhead dome lighting
- (3) Opening port lights
- Vent overhead
- Overhead locker
- Kerosene lamp with chimney and top
- Weems & Plath clock with tide index
- Reading lights port and starboard on forward bulkhead
- Large hanging storage locker with double door access center aft
- Cubby and locker storage outboard port and starboard
- Quarter berth to starboard
- Double berth to port
- Drawer and locker storage below bunks

Electrical System

12-Volt DC System

- Nautilus by New Mar 12 volt electrical panel with volt and amp meter
- 12 Volt outlets
- Fresh water pump
- Bilge pumps
- Sump pump
- Windlass
- Refrigeration
- Electronics
- Lights
- Engine blowers

120-Volt AC System

- Nautilus by New Mar 120 volt electrical panel with volt and amp meter
- Weatherproof ship to shore receptacle
- 110-Volt outlets
- Water heater
- Battery charger

Represented by a Certified Professional Yacht Broker (CPYB)

A Certified Professional Yacht Broker (CPYB) is recognized as having achieved the highest level of industry accreditation, available only to fully-qualified yacht sales professionals. The CPYB program is administered by Yacht Brokers Association of America in partnership with Florida Yacht Brokers Association, Northwest Yacht Brokers Association, California Yacht Brokers Association, Boating Ontario Dealers, British Columbia Yacht Brokers Association and Gulf Coast Yacht Brokers Association.

The CPYB program is also endorsed by the Marine Retailers Association of the Americas (MRAA) Marine Industry Certified Dealership (MICD) program and leading yacht manufacturers as a key component of their own industry standards; the highest level of achievement for their member yacht sales professionals.

Experience & Validity

The CPYB designation is earned by eligible yacht sales professionals, who, after serving a minimum of three years as a full-time professional, have successfully completed a comprehensive written examination to validate professional competency.

Continuing Education

A CPYB is committed to their personal and professional development through continuing education, as mandated for CPYB recertification every three years.

Ethics & Standards

A CPYB adheres to, and is accountable to, a nationally recognized Code of Business Ethics and conducts yacht sales transactions in accordance with a stringent set of industry standards of practice.

Fiduciary Responsibility

A CPYB maintains a dedicated escrow/trust account to protect their client's funds. A CPYB understands their fiduciary responsibility and obligations with respect to client funds.

Transaction Management

A CPYB uses proven, industry-recognized transaction documents, which fully and clearly describe all terms and conditions of a transaction. Honesty & Integrity A CPYB maintains the highest standards of professionalism, acting with honesty and integrity.

Trust & Confidence

A CPYB instills confidence, trust and consistency in all transactions involving fellow yacht sales professionals for the benefit of the client.

Default Disclaimer

The Company offers the details of this vessel in good faith but cannot guarantee or warrant the accuracy of this information nor warrant the condition of the vessel. A buyer should instruct his agents, or his surveyors, to investigate such details as the buyer desires validated. This vessel is offered subject to prior sale, price change, or withdrawal without notice.

Photos



Mason 43 - Defiant - On Mooring



Mason 43 - Defiant - On Mooring



Mason 43 - Defiant - On Mooring



Mason 43 - Defiant - On Mooring



Mason 43 - Defiant - On Mooring



Mason 43 - Defiant - On Mooring



Mason 43 - Defiant - On Mooring



Mason 43 - Defiant - Aft Deck



Mason 43 - Defiant - Cockpit



Mason 43 - Defiant - Cockpit



Mason 43 - Defiant - Cockpit



Mason 43 - Defiant - Cockpit



Mason 43 - Defiant - Cockpit



Mason 43 - Defiant - Cockpit



Mason 43 - Defiant - Cockpit



Mason 43 - Defiant - Cockpit



Mason 43 - Defiant - Cockpit



Mason 43 - Defiant - Cockpit



Mason 43 - Defiant - Cockpit



Mason 43 - Defiant - Cockpit



Mason 43 - Defiant - Cockpit



Mason 43 - Defiant - Cockpit



Mason 43 - Defiant - Cockpit



Mason 43 - Defiant - Cockpit



Mason 43 - Defiant - Cockpit



Mason 43 - Defiant - Cockpit



Mason 43 - Defiant - Cockpit



Mason 43 - Defiant - Weather Deck



Mason 43 - Defiant - Weather Deck



Mason 43 - Defiant - Coach Roof



Mason 43 - Defiant - Coach Roof



Mason 43 - Defiant - Coach Roof



Mason 43 - Defiant - Coach Roof



Mason 43 - Defiant - Fore Deck



Mason 43 - Defiant - Fore Deck



Mason 43 - Defiant - Windlass



Mason 43 - Defiant - Furler



Mason 43 - Defiant - Furler



Mason 43 - Defiant - Bow Roller



Mason 43 - Defiant - Fore Deck



Mason 43 - Defiant - Spinnaker Halyard Winch



Mason 43 - Defiant - Jib Halyard Winch



Mason 43 - Defiant - Main Halyard Winch



Mason 43 - Defiant - Stay Sail Halyard Winch



Mason 43 - Defiant - Main Sail Cover



Mason 43 - Defiant - Main Sail Cover



Mason 43 - Defiant - Main Sail



Mason 43 - Defiant - Dodger



Mason 43 - Defiant - Companionway



Mason 43 - Defiant - Salon



Mason 43 - Defiant - Galley



Mason 43 - Defiant - Galley



Mason 43 - Defiant - Galley



Mason 43 - Defiant - Galley



Mason 43 - Defiant - Galley



Mason 43 - Defiant - Galley



Mason 43 - Defiant - Salon



Mason 43 - Defiant - Salon



Mason 43 - Defiant - Salon



Mason 43 - Defiant - Salon



Mason 43 - Defiant - Salon



Mason 43 - Defiant - Salon



Mason 43 - Defiant - Head



Mason 43 - Defiant - Stall Shower



Mason 43 - Defiant - Head



Mason 43 - Defiant - Head



Mason 43 - Defiant - Forward Cabin



Mason 43 - Defiant - Forward Cabin



Mason 43 - Defiant - Forward Cabin



Mason 43 - Defiant - Forward Cabin



Mason 43 - Defiant - Forward Cabin



Mason 43 - Defiant - Forward Cabin



Mason 43 - Defiant - Salon



Mason 43 - Defiant - Salon



Mason 43 - Defiant - Salon



Mason 43 - Defiant - Salon



Mason 43 - Defiant - Navigation Station



Mason 43 - Defiant - Navigation Station



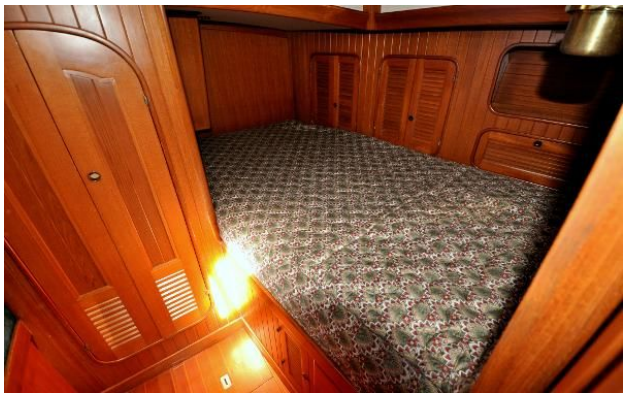
Mason 43 - Defiant - Companionway



Mason 43 - Defiant - Aft Cabin



Mason 43 - Defiant - Aft Cabin



Mason 43 - Defiant - Aft Cabin



Mason 43 - Defiant - Aft Cabin



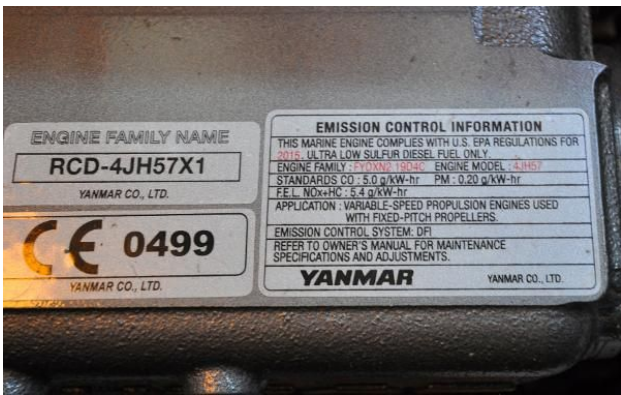
Mason 43 - Defiant - Aft Cabin



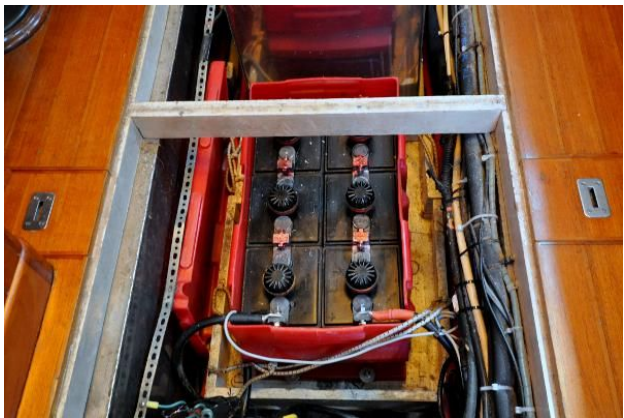
Mason 43 - Defiant - Engine



Mason 43 - Defiant - Engine



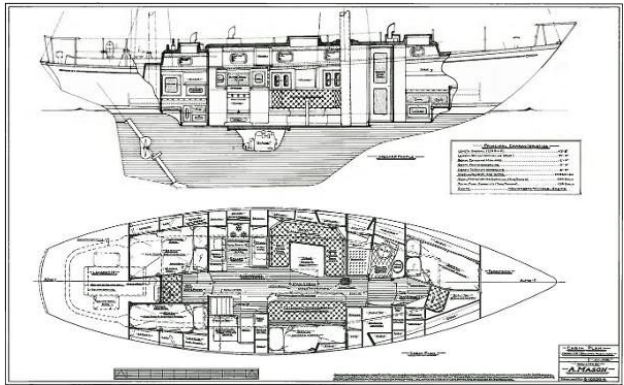
Mason 43 - Defiant - Engine



Mason 43 - Defiant - Battery Banks



Mason 43 - Defiant - Below Salon Sole



Mason 43 - Defiant - Layout