



WORTH AVENUE YACHTS



SAINT ROQUE *NAME RESERVED*

70' 7" (21.51m) NEW ENGLAND BOATWORKS Cruising Ketch 1995

Worth Avenue Yachts LLC - Newport | 55 America's Cup Avenue | Newport | Fax:+1-561-833-4463

Jonathan Chapman jonathan@worthavenueyachts.com +1 (401) 474-4793

Inquiries@WorthAvenueYachts.com

SAINT ROQUE *NAME RESERVED*

SPECIFICATIONS

LENGTH:	70' 7" (21.51m)
BEAM:	18' 1" (5.51m)
DRAFT:	13' 10" (4.22m)
MODEL YEAR:	1995
BUILD YEAR:	1995
REFIT YEAR:	2018
BUILDER:	NEW ENGLAND BOATWORKS
MODEL:	
HULL CONFIGURATION:	
HULL MATERIAL:	Aluminum
GROSS TONNAGE:	
FLAG:	
CLASSIFICATION:	--
MCA COMPLIANT:	
MAIN ENGINES:	210 HP, Single, 1995, Inboard, Diesel, Caterpillar, 3208,
FUEL:	3842.19 L / 1015 Gal
WATER:	1665.58 L / 440 Gal
SPEED:	
STATEROOMS:	3
SLEEPS UP TO:	11
TAX STATUS:	
LOCATION:	Castine, Maine United States
PRICE:	\$675,000 USD

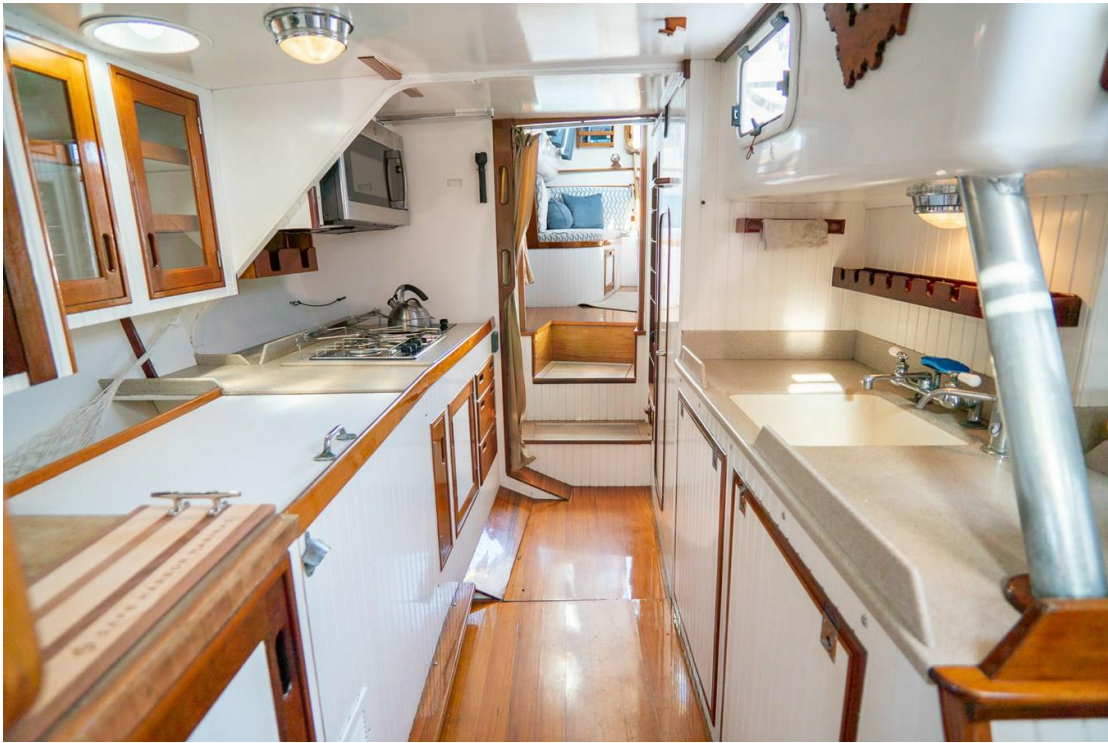
Salon



Salon



Galley



Galley



Galley



Dining Area



Dining Area



Dining Area



Owners Stateroom



Owners Stateroom



Owners Stateroom En Suite Head



Owners Stateroom En Suite Head



Owners Stateroom Shower



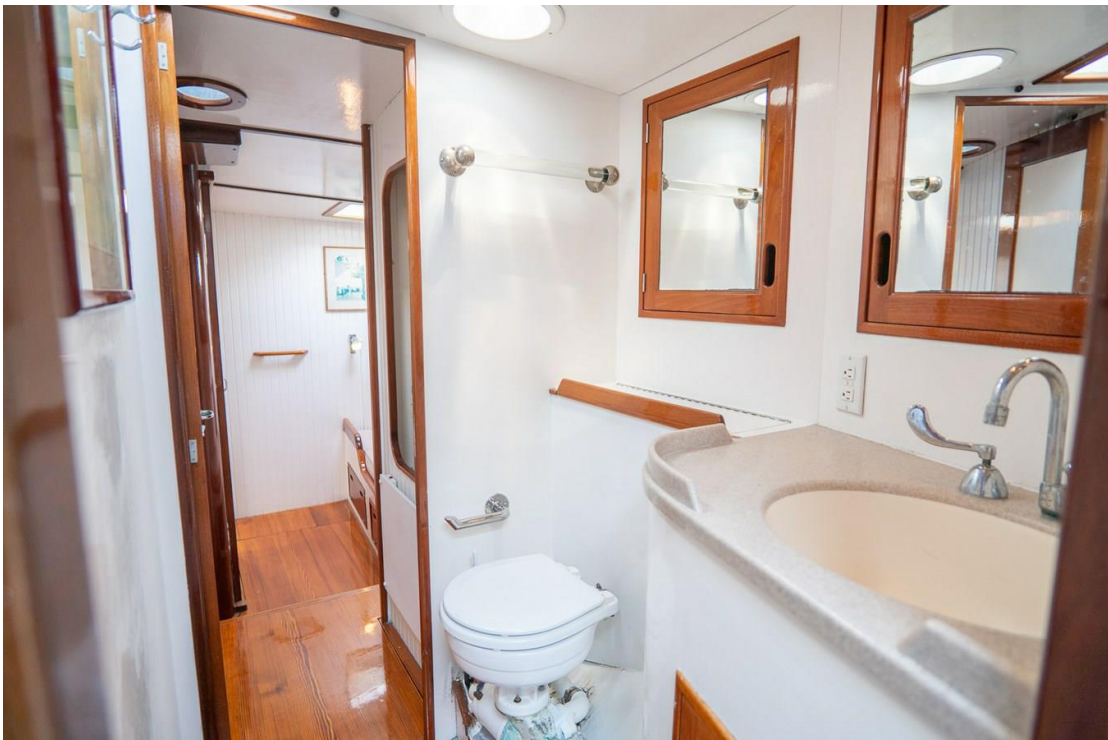
Starboard Guest Stateroom



Starboard Guest Stateroom



Starboard Guest Stateroom Head



Port Guest Stateroom



Port Guest Stateroom



Engine Room



Pilothouse



Pilothouse



Pilothouse



Stern Deck



Side Deck



Looking Aft



Forepeak



Underway





31





Overview

SAINT ROQUE is a timelessly classic, simple, and contemporary yacht designed for short-handed and comfortable family cruising. Her large decks are clean and uncluttered, her accommodations are understated and practical, and her performance is as secure and predictable as any true ocean-going yacht should be. Designed by Ted Hood, she was built at New England Boat Works for a well-known Newport, RI yachting family who cruised her extensively from Maine to the Bahamas on an annual basis as well as visits to the Caribbean, she was often double-handed. In 2017 the yacht was acquired in an off-market transaction by another well-known yachtsman who had admired her for years. The yacht was immediately showered with a host of modern upgrades and the new owner continued with the high level of maintenance the yacht has always had since day one. SAINT ROQUE shows beautifully and will not disappoint upon inspection.

Salon

- Very large L-shaped settee with opening leaf table to comfortably sit 8 to 10 guests
- (2) Overhead Bowmar opening hatches
- (2) Overhead Deck prisms
- Opening port with storm shutter
- V-groove paneling
- All weather custom fitted carpet on varnished sole
- 12V overhead and outboard lighting
- Fusion stereo/Bluetooth radio with speakers (2018)
- Settee cushions recovered (2018)
- Access to the galley and center cockpit companionway

Owners Stateroom

- Offset double berth outboard with drawer storage underneath
- Overhead deck prism
- Bowmar opening hatch
- V-groove paneling
- Assorted book racks, shelves, drawers and cubbies
- Large hanging locker
- Mirror on aft bulkhead
- Varnished sole
- GFI outlet
- 12V overhead lighting

En-Suite Owners Head

- Corian countertop with wash basin
- Mirrored vanity with generous storage
- Hanging locker
- Laundry hamper
- Electric freshwater flush head
- Bathtub with shower
- Towel bars
- Bowmar opening hatch
- Varnished sole

- GFI Outlet
- 12V Overhead lighting

Port Guest Stateroom

- (2) Over under offset single berths outboard with lee cloths and storage underneath
- (2) Opening ports with storm shutters
- Bowmar opening hatch
- Overhead deck prism
- V-groove paneling
- Hanging locker
- Varnished sole
- (2) berth reading lamps
- 12V Overhead lighting
- 12V Cabin fan
- Fire extinguisher

En-Suite Guest Head

- Corian countertop with wash basin
- Mirrored vanity with generous storage
- Electric freshwater flush head
- Bowmar opening hatch
- Varnished sole
- GFI outlet
- 12V overhead lighting
- Access to shared forepeak shower

Starboard Guest Stateroom

- (2) Over under single berths outboard with lee cloths
- (2) 12V reading lights
- (2) 12V DC fans
- 12V Overhead lighting
- Bowmar opening hatch
- Overhead Deck Prism
- Opening port with storm shutter
- Hanging locker
- Varnished sole
- V-Groove paneling
- Access to shared stall shower in forepeak
- GFI Outlet

Starboard Guest Stateroom/Shared Head

- Corian countertop with wash basin
- Mirrored vanity with generous storage
- Electric freshwater flush head
- Bowmar opening hatch

- Varnished sole
- GFI outlet
- 12V overhead lighting
- Assorted storage nooks and lockers

Forepeak

- Large Bowmar overhead hatch
- Shared shower for both port and starboard guest staterooms
- Access to chain locker, headstay motor and anchor windlass motor
- 12V cigarette-type plug

Pilothouse

- Cushions (2018)
- U-shaped settee with two berths outboard
- Freezer under sole
- Excellent visibility provided at fully protected inside helm station
- Centerline nav-desk
- Large opening forward hatch / window
- (2) Opening ports with storm shutters
- All-weather custom carpet over varnished sole
- 12V overhead lighting
- (2) 12V reading lamps
- Companionway to aft deck

Galley

- Force 10 3-Burner Gas Stove
- Force 10 Single Burner (Induction)
- Microwave
- Refrigerator
- Trident Marine LP Gas Detection and System
- Large chest freezer under pilothouse sole

Hull and Deck and Sailing Equipment

- Full batten Main (NPL Tour Ultra X Norlam 2018)
- Furling Mizzen (NPL Tour Ultra X Norlam 2018)
- Furling Genoa (NPL Tour Ultra X Norlam 2018)
- Gennaker (very recent – exact age unknown)
- Main, Mizzen Booms and spreaders all sanded and repainted Awlgrip 2018)
- Keel-stepped aluminum main mast with triple blade spreaders
- Main boom with hydraulic boom vang
- Deck-stepped aluminum mizzen mast with double spreaders
- Aluminum mizzen boom with hydraulic boom vang
- BSI standing rigging (2018)
- All hydraulics and furling units stripped and serviced (2018)

- Navtec Hydraulic Rams and Controls
- 2 x Harken 66 2-speed winch
- 4 x Harken 964 3-speed winch
- 4 x Harken 53 2-speed winch (mast)
- 2 x Harken 56 3-speed winch
- 2 x Harken 48 2-speed winch
- Cockpit Cushions (2018)
- Hull shot-blasted back to bare aluminum primed and anti-fouled (2020)
- Deck repainted (2019)
- Daggerboard with new winch (2022)
- Welded aluminum hull-to-deck joint
- Welded aluminum frames
- Structural aluminum bulkheads and partitions
- Multiple deck prisms

Electronics and Navigation

- B&G Zeus 3 16" Multifunction Display at Nav Station (2018)
- B&G Zeus 3 7" Multifunction Display at outside station (2018)
- B&G GPS sensor (2018)
- B&G Autopilot (2018)
- (2) B&G V5 displays outside station (2018)
- (2) B&G V5 displays at Nav Station (2018)
- Navlink Wireless NEMA 2000 server (2018)
- Wifi amplifier (2018)
- RedPort Halo Long Range Wifi extender (2018)
- Icom IC-M506 VHF with Ram Mic
- Fusion stereo with speakers above and below deck
- USB chargers around the boat

Machinery and Electrical

- Cat 3208 main engine (317 hrs SMOH in 2019) 10/2022
- Twin Disk SM-266 Transmission
- Headhunter holding tank monitoring system
- Northern Lights 9kw Generator in sound shield (372 hrs) (2019)
- New batteries throughout, new charger / inverter and battery monitoring system (2019)
- Three blade bronze feathering prop
- NAIAD bow thruster
- MUIR 12v DC windlass
- Whale 11gal Stainless hot water heater
- Engine room steam cleaned and repainted (2019)
- Extensive overhaul of engine room by New England Boatworks (2019)

Broker Remarks

SAINT ROQUE is a truly wonderful world cruising yacht which has enjoyed top notch custodianship from both her original and current owner. She has clean, simple and uncluttered decks, understated and practical accommodations, minimum brightwork, and simple systems

which are easily handled by minimal crew.

SAINT ROQUE is being offered on a 3-year Lease/Charter with a Purchase Option creating a unique and advantageous opportunity for interested parties.

DISCLAIMER

Specifications are provided for informational purposes only. Data was obtained from sources believed reliable but is not guaranteed by owner or brokers. Buyer assumes responsibility to verify all speeds, capacities, consumptions and other measurements contained herein and otherwise provided and agrees to instruct his agents to confirm such details prior to purchase. Vessels subject to prior sale, price and inventory changes and withdrawal from market without notice.



WORTH AVENUE
YACHTS

Worth Avenue Yachts LLC - Newport | 55 America's Cup Avenue | Newport
Inquiries@WorthAvenueYachts.com